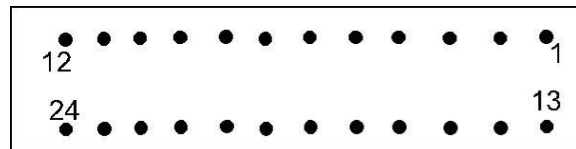


Stepwise instruction manual to connect TSC-206IM

1. prepare power wires to connecting. They are long red and black wires.
2. prepare ystem interface wires. White, Green, Black short wires.
3. do the same for programming wire adaptor.
4. prepare GPS interface wires. J3 for TX GPS line. J4 for RX GPS line. Do not forget to connect ground plan of navigator to gnd of controller(J2- power line – long wire or J14- interface line-short wire)

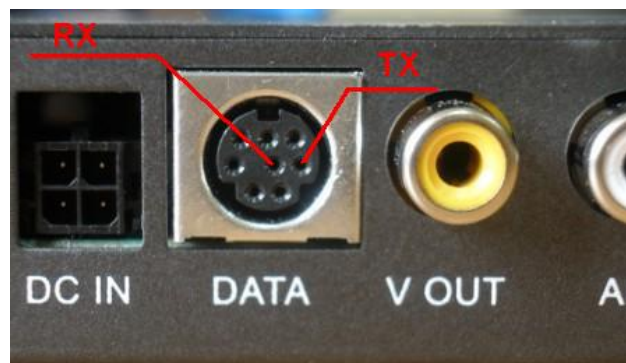
4.1. For GVN53



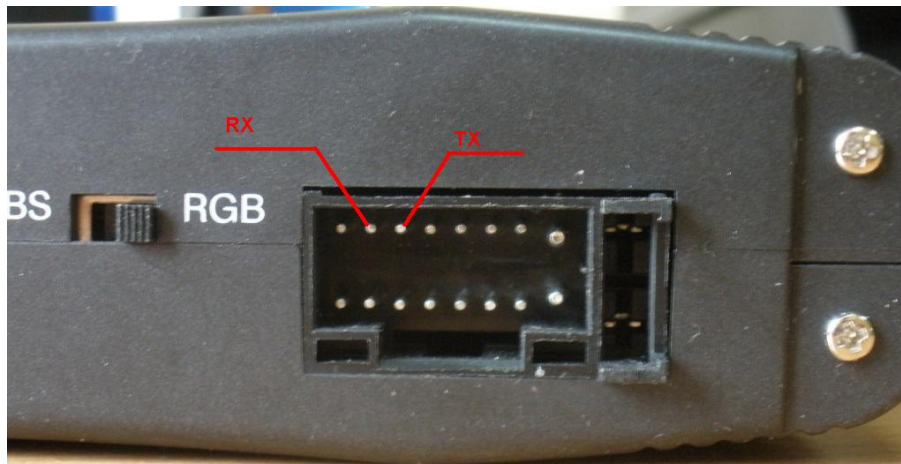
GPS connector view

- | | |
|------------------|-----------------|
| 1. video- | 13. video+ |
| 2. B | 14. GND_RGB |
| 3. R | 15. G |
| 4. SYNCH | 16. RX |
| 5. TX | 17. GND_Digital |
| 6. LEFT | 18. n.c. |
| 7. RIGHT | 19. GND_Audio |
| 8. MUTE | 20. n.c. |
| 9. SP- | 21. Sp+ |
| 10. N.C. | 22. n.c. |
| 11. MACCA | 23. n.c. |
| 12. +12V battery | 24. ACC |

4.2. for navigation box PHANTOM or such types spt100,spt200, CS9200 and so on



4.3. for LM




5. connect both RX and TX lines. So TSC can automatically navigation found
6. connect USB cable to interface module.
7. connect an wired adaptor to interface module.
8. launch service program SerPro. The last version is 1.17. The LED lamp of the interface module must flashes periodically.
9. open window monitoring of the serpro. You must see next:

```
Monitoring | TIM-201 | TSC-206
***** Controller "DTI-M" is connected *****
Controller          "DTI-M"
The serial number    84
Boot version         1.02
Application version   2.77
***** Controller "DTI-M" is disconnected *****
***** Controller "DTI-M" is connected *****
Controller          "DTI-M"
The serial number    84
Boot version         1.02
Application version   2.77
```

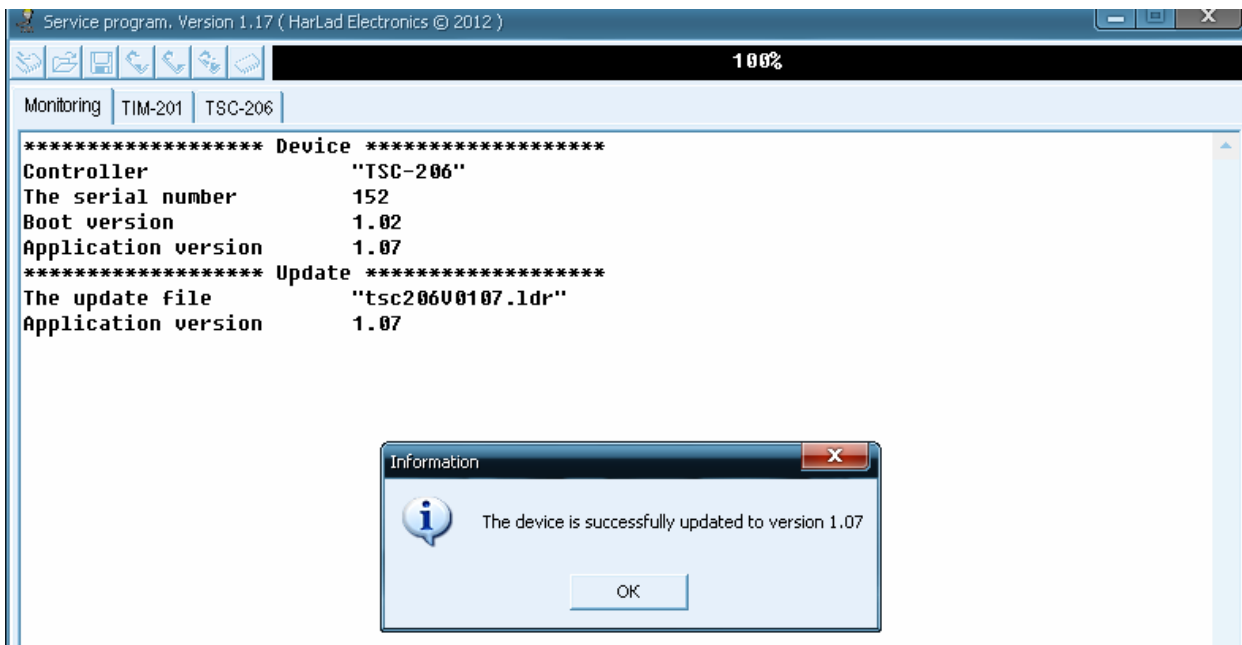
messages will indicate connected interface or not.

10. open page for TSC206.
11. touch the button with green arrow- read configuration from the device. Progress bar must be appear.
12. when configuration read, open window monitoring. You must see software data(application version) of controller. Version must be 1.07 or later.

```
Controller          "TSC-206"
The serial number    152
Boot version         1.02
Application version   1.06
```


13. If application version before 1.07 you must to update it.
 - 13.1. return to TSC206 page.
 - 13.2. touch the button 
 - 13.3. by using dialog window choose the update file TSC206V0107.LDR. TOUCH OPEN

13.4. MONITORING WINDOW WILL AUTOMATICALLY OPEN WITH PROGRESS BAR



13.5. after device software updated, You can return to the device page

13.6. connect touchpanel cabel to the device.

13.7. launch semiautomatic configuration module of software by pushing the button  in the window lines/corner. Push yes in the window that appear. If touchpanel connected not correctly, LED lamp "state" will flashes infinitely. If LED flashes once with pause and message "press in the top left corner" will appear in the window top, in the place of the progress bar go to the next step.

13.8. touch the left upper corner point in time of 2 sec or more.

13.9. release touch.

13.10. press in the top right corner message will appear. LED flashes twice.

13.11. press and hold for time of 2 or more seconds. Release.

13.12. press in the bottom right corner message will appear. LED flashes for 3 times.

13.13. pres and hold the point. Release.

13.14. press in the bottom left corner message will appear. LED flashes for 4 times.

13.15. press and hold the point. Release.

13.16. error setup message will appear if you touch not corrected points. You need to repeat tuning.

13.17. if all ok, no any messages will appear but windows in the group lines/corner will fill out. If navigation unit found? The LED “state” go light. If navigation not found, the LED go out.